

# Bringing Better Health *to Life*

*A Publication of Conway Medical Center*

*Fall 2009*

## *Building Better Healthcare*

by Phil Clayton, CEO



As we enter the second half of 2009, all of us at Conway Medical Center are pleased to announce the opening of our new Patient Tower. We have worked diligently to bring our vision for the Tower to fruition. I am especially proud of our Building Services Department for the outstanding job they have done working with the architects, engineers, contractors and builders. While no construction effort goes along without a few glitches and inconveniences, our plans have stayed on target, and I want to thank all those who have been involved for their good work.

I would also like to thank everyone who assisted us. From plumbers to electricians to drywallers and so many more – thank you for the work you have done. Most of the people who worked on our building live here in our community, and we are pleased to have had their help. We are confident this addition will serve our patients well for many years.

Yet our Patient Tower is not our only big undertaking. We have much more going on, and we are especially pleased with our plans to build a new clinic for Aynor Family Medicine. Families in Aynor will appreciate the many services we will be able to offer and the comfortable and convenient facility. We have served the Aynor community for many, many years, and we are looking forward to our new facility there and the expanded services we will be able to offer.

We have also focused on technology. Recently we installed a 64-Slice CT Scanner. The images created with this technology will allow our physicians to quickly assess patients with clear images and precise details. This is a remarkable capability, and one that will help doctors with diagnosing patients with liver, kidney, gall bladder, heart, and many other internal organ concerns.

We also have other outstanding imaging services. From our digital mammography technology, which is the latest technology in assessing breast

health to our cardiac biplane imaging system, which offers the clearest views and low x-ray doses during procedures, we are committed to providing our patients the latest technology in health care.

In our new Endoscopy suite, we will be able to provide the latest in diagnosis and treatment for gastrointestinal health concerns. And these are just a few of our technological enhancements.

Other priorities at the hospital include our ongoing patient safety measures. We recently launched a hand washing educational initiative encouraging everyone who comes to our hospital to join us in frequent and thorough hand washing techniques. We know that germs are abundant on our hands, and we want everyone to wash their hands with soap and water or with a waterless hand cleanser often while visiting friends or family members. We appreciate everyone's help in keeping our hospital as germ-free as possible.

In closing, I would like to encourage you to read the many articles in this issue. Please contact us if you would like more information or if you have questions. I would also like to extend my thanks and gratitude to all those who give their time and talent and treasure to the Conway Medical Center Foundation. As you will see, many people in our community have offered their support, and we greatly appreciate their many kindnesses, generosity, and commitment. Because of them, we are able to provide many outreach services and further improve and enhance the care we provide. Please accept my sincerest thanks.

Finally, I would like to recognize everyone at Kingston Nursing Center – our team, our residents, our families. Kingston recently celebrated its 20th Anniversary. That's 20 years of providing much needed residential services and medical care. We are grateful to each family who has been a part of the Kingston family through the years, and we are grateful to our team who truly make a difference in the lives they serve. Thank you and Happy Anniversary.

# News & Updates

## CMC Welcomes

Please join us in welcoming Pansy Cooper, RN, MSN, C-FNP, Linda Dales, MD, Wendy Miller, MD, and Shea Beloff, PA who recently joined the Conway Physicians Group.



**Pansy Cooper, RN, MSN, C-FNP**, received her Master of Science in Nursing from MUSC in Charleston and completed her Post Graduate Certificate for Primary Care at

University of South Carolina. As a certified Family Nurse Practitioner, Ms. Cooper's expertise is in Family Medicine being able to provide health care to individuals of all ages. Pansy Cooper's practice is located at 120 Professional Drive, Suite B in Conway. For more information or to schedule an appointment, please call **347.9500**.



**Linda Dales, MD**, completed her residency and fellowship at Columbia University in New York, and is board certified in Endocrinology and Internal Medicine. As an endocrinologist,

Dr. Dales specializes in treating disorders of the endocrine system, such as diabetes and hyperthyroidism. Dr. Dale's practice is located at 2376 Cypress Circle, Suite 203 in Conway. For more information or to schedule an appointment, please call **234.9700**.



**Wendy Miller, MD**, received her Doctor of Medicine from the Medical University of South Carolina and received a Bachelor of Pharmacy from the University of Texas. She

is Board Certified in Family Medicine. As a specialist in family medicine, Dr. Miller cares for all age groups and brings a wealth of experience to our community. Dr. Miller's

practice is located in Forest Crossing Plaza at 4999 Carolina Forest Blvd., Suite 9 in Myrtle Beach – at the crossroads of Carolina Forest Blvd. and River Oaks Drive. For more information or to schedule an appointment, please call **236.2700**.



**Shea Beloff, PA** has joined Dr. James Adamson of Conway Physicians Group Internal Medicine. Ms. Beloff received her Bachelor of Science degree in Biological Sciences

Education from Wright State University in Dayton, Ohio. She went on to receive her Certificate of Physical Assistant at Kettering College of Medical Arts and her Masters of Physician Assistant Sciences with emphasis on Metabolic Syndrome at the University of Nebraska Medical Center. Ms. Beloff is a member of the American Academy of Physician Assistants and the SC Academy of Physician Assistants. For more information or to schedule an appointment, please call **248.4414**.

## Balloon Sinuplasty

Conway Medical Center and Dr. Darin Sutton of CPG Carolina Bays ENT now offer Balloon Sinuplasty technology for chronic sinusitis patients. Sinusitis is one of the most common chronic health problems in the U.S., affecting millions of Americans each year. It significantly impacts an individual's physical, functional, and emotional quality of life.

Balloon Sinuplasty is an endoscopic sinus surgery that involves using a small, flexible balloon catheter that is placed through the nostril into the blocked sinus passageway. When the balloon is inflated, it gently restructures and opens the sinus passageway, restoring normal sinus drainage and function. This technology enables physicians to treat sinusitis entirely through the nostrils, and in many cases without tissue or bone removal resulting in a benefit for sinusitis patients.

If you are one of the million Americans who suffer with chronic sinusitis, Balloon Sinuplasty may be for you. For more information please call, CPG Carolina Bays ENT at **347.7300**.

## Patient Safety: Hand Hygiene



In the past five years, we have joined hospitals around the world in an ongoing endeavor to educate everyone who enters our facility about the importance of good

hand hygiene. From the World Healthcare Organization to the Centers of Disease Control (CDC), we are all saying the same thing, "wash your hands." We know that hand washing is the first line of defense in eliminating microorganisms responsible for causing infections. In fact, in the past several years, improved hand hygiene has helped hospitals dramatically lower their incidence of MRSA and other infections. Yet even though we know how effective hand washing is, we still need to work harder at making good hand washing a habit.

At Conway Medical Center, we have taken a number of steps to bring home this message. We stress it at new employee orientation. We talk about it in staff meetings. We put up signs. We strategically place waterless hand sanitizers throughout the hospital, and we stay vigilant.

Our infection rates at Conway Medical Center are evidence that hand washing works. Still, we can and should do more. And we are committed to continue our efforts to educate our staff, visitors, and patients the importance of good hand hygiene. We ask that you wash your hands before and after patient contact and visits, before eating, after shaking hands, sneezing or coughing, and after visiting the restroom. We want to keep our patients, visitors and employees safe, so please join us in making clean hands a reality 100% of the time.



## Kingston Golf Tournament

We would like to extend our thanks to everyone who participated in the Kingston Classic over Memorial Day weekend. Special thanks to all of our sponsors and teams. We would also like to thank our committee, the board, our hospital team, and all the volunteers who worked so hard to make this event a success. Together we raised much needed funds which will help us to continue our mission. Again, many, many thanks.

# News & Updates

## 64 Slice CT Now Available

Conway Medical Center now has the latest diagnostic imaging technology available for its patients - the Philips Medical Systems Brilliance 64-slice CT Scanner.

In just five heartbeats, doctors are able to gain a good understanding of the patient's heart health helping them to discover heart disease and it's warning signs much earlier than ever before. "For patients with a family history of cardiovascular disease, the new CT scanner can help determine whether a or not a person has certain congenital defects, vessel concerns such as plaque buildup or valve problems. This may allow us to treat the patient at a very early stage with lifestyle modification and medication, rather than invasive surgery," stated Dr. Keith Wyche, cardiologist.

The Brilliance 64-slice CT offers comprehensive organ assessment within seconds and is the ideal tool for organ perfusion studies, coronary artery imaging, pulmonary imaging, and is extremely effective with critically ill or injured patients including multi-organ trauma evaluation and stroke evaluation.

From routine diagnostic exams to life threatening emergency care, the 64-slice CT Scanner is breaking barriers in the speed and accuracy of patient exams.

## Conway Introduces New Technology

Conway Medical Center recently introduced the newest heart catheterization technology available with the addition of the Philips Allura Xter SZ10 to its cardiovascular care capabilities. This state-of-the-art technology is the first in the region and the Southeast which has the ability to interface with Conway Medical Center's new 64-slice CCTA, echo, previous heart catheterization images and other radiology imaging modalities, into the Cath Lab and reading stations. This technology allows us to improve cardiac care, making earlier and more decisive treatment plans with the ability to have a comprehensive team involved. These images are able to be visualized within seconds by other institutions to network seamlessly within the area. This technology, along with the cardiologists at Waccamaw Cardiology and Conway Medical Center health care system, help to give the patient the best cardiac care possible in a timely fashion. This equipment optimized the balance of efficient workload with low x-ray dosing with exceptional image quality. In addition to the images, the cardiac cath table allows for the ability to tilt and cradle to give the operator optimal positioning for patients undergoing pacemaker implants, AICDs, biventricular pacemakers and other cardiac procedures. All this allows for Conway Medical Center and Waccamaw Cardiology to continue to pursue their vision of providing the highest quality of cardiac care for our patients.

# Conway Physicians Group

Conway Physicians Group, an affiliate of Conway Medical Center, is an integrated physician and healthcare services network created to provide easy and convenient access to healthcare services for our community. We focus on high quality patient outcomes, patient safety, and guest services. And our goal is to achieve the best outcome we can for each and every patient.

Together, we represent many specialties, and we are continuing to add specialties and services to further address our community's needs. Whether you are new to our community, a visitor, or just in need of a current physician or healthcare provider, we can help. For a physician referral, please call **843.347.8108**.

### Aynor Family Medicine

Jody W. Hutson, DO, FAAP  
Cynthia S. Hamilton, FNP  
**843.358.5806**  
99 Jordanville Road • Aynor

### Carolina Bays ENT Otolaryngology

Darin V. Sutton, MD  
N. Page Tucker, AuD  
**843.347.7300**  
808 Farrar Drive • Conway

### Endocrinology

Linda M. Dales, MD  
**843.234.9700**  
2376 Cypress Circle, Ste. 205 • Conway

### Family Medicine @ Singleton Ridge

Pansy Cooper, FNP  
Paul Gordon, MD  
**843.347.9500**  
124 Professional Park Drive, Ste. A • Conway

### Family Medicine @ Towne Centre

Wendy L. Miller, MD  
**843.236.2700**  
4999 Carolina Forest Blvd., Suite 9  
Myrtle Beach

### Gastroenterology

Richard H. Eisenman, MD  
Joseph G. Edelson, MD  
Robin L. Niederwerfer, NP  
**843.347.6038**  
2376 Cypress Circle, Ste. 203 • Conway

### Internal Medicine

James W. Adamson, MD, FACP  
Shea Beloff, PA-C  
**843.248.4414**  
1301 Creel Street • Conway

### Pediatrics

Stephen J. Malloney, DO  
**843.903.4111**  
4022 Postal Way, Suite B • Myrtle Beach

### Pulmonary & Sleep Medicine

Hafez M. Hayek, MD  
**843.234.6888**  
2376 Cypress Circle, Ste. 100 • Conway

### Woman's Medical Center Obstetrics & Gynecology

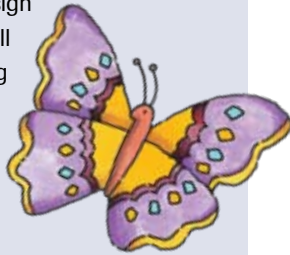
Terry B. Levenson, MD, FACOG  
Nancy H. Collins, MD  
**843.347.7216**  
8004 Myrtle Trace Drive • Conway

## Club News



### **Attention Expectant & New Parents**

If you are expecting or recently welcomed home a baby, the BirthPlace at Conway Medical Center has a special program just for you – the VIP Club. As a registered member of the Very Important Parent Club, you will receive free gifts such as a keepsake memento of your baby's footprints, as well as a "First Year" video that shows you what to expect during your baby's first year and how to meet the special needs of newborns. You'll also receive discounts from local merchants, a complimentary pregnancy calendar, an ongoing newsletter filled with educational material, and more. Best of all, membership in the VIP Club is free. Call us or e-mail us today and we'll sign you up to start receiving your benefits. Call **843.347.8108** with your name, mailing address, due date and physician's name and we'll send your starter packet!



### **Staying Active & Healthy**

At Conway Medical Center, we know seniors are focused on staying active and healthy. That's why we have developed our Senior Privileges club to encourage preventive health practices and enhance access to quality health care services.

As a member of Senior Privileges, you will receive valuable coupons and discounts from area merchants, a health journal with the latest facts, tips and checklists on preventive care, and a handy medication recorder. Plus, we'll send you special notices on upcoming health screenings, seminars and special events.

Best of all, membership in our Senior Privileges club is free to all seniors 55 and older. Call us today at **843.347.8108** and we'll help you stay on top of your health.

## Our Services

- **Cardiovascular Services**
- **Cardiac Rehabilitation**
- **Diabetes Management**
- **Diagnostics/Radiology**
- **Durable Medical Equipment**
- **Emergency Services**
- **Family Medicine Centers**
- **Intensive Care**
- **Laboratory Services**
- **Level II Perinatal Center**
- **Level III Trauma Center**
- **Long Term Care**
- **Maternity Services/The BirthPlace**
- **Outreach Services**
- **Orthopaedic Services**
- **Palliative Care & Hospice**
- **Pastoral Care Services**
- **Pediatric Services**
- **Physical Therapy**
- **Subacute Center**
- **Surgical Services**
- **Telemetry Services**
- **Weight Loss Surgery**
- **Wellness & Fitness Center**

For more information about our key services visit our website at [www.conwaymedicalcenter.com](http://www.conwaymedicalcenter.com)



# 2008 Foundation Donors

## Tribute Gifts

### A Star is Born

*Honoring the Birth of:*

#### Dalton Q. Alford

Cynthia Alford

#### McCallie P. Brown

Ocean View Mobile Home  
Park LLC

#### Taylor E. Colton

William Colton

#### Levi K. Dickerson

Michael Hatchell

#### Justin J. Fellows

Paula Fellows

#### McKenzie L. Fletcher

June M. Gibson

#### Shane M. Foster

Susan G. Posey

#### Michelle E. Gough

Phil Lobianco

#### Aaron R. Gustafson

Paula Fellows

#### Ridge H. Hayes

Jerome L. Housand

#### Riley S. Hayes

Jerome L. Housand

#### Gracie E. Lee

Benny Allen

#### Timothy M. Lee

Benny Allen

#### Jaxson Sean Martinez

Daniel Cesaraz

#### Kynsli A. Newman

Ozell J. Newman

#### Emma Niederwerfer

Kathleen B. Niederwerfer

#### Dylan R. Padgette

Tonya R. Clark

#### Kyleigh N. Richardson

June M. Gibson

#### John L. Rogers

Michael Hatchell

#### Wyatt Z. Skipper

Lynn Skipper

#### Blake A. Truett

Barbara P. Lewis

#### Elizabeth B. Woodle

Christopher Woodle

### Walk to Remember

#### Joseph A. Cincotta

Diana M. Cianflocco

#### Shayla A. Thompson

Marilyn G. Roberts

### Honor Gifts

*In Honor of:*

#### H.T. Abbott

Mary Ann L. Stalvey

#### Linda Anderson

Paula B. Massey

#### Mike Battle

Marianne L. Levenson

#### William Benson

Marianne L. Levenson  
CMC Board of Trustees

#### Larry Biddle

Marianne L. Levenson

#### Alec Black

Mary Ann L. Stalvey

#### FeDora Cannon

Paula B. Massey

#### Carolina Radiology Associates

Jane M. Leahy

#### Carol Chestnut

Paula B. Massey

#### Conway Emergency Group

Jane M. Leahy

#### L.B. Courtney

Hal B. Holmes

#### Johnny Creel

Sandra C. Creel

#### Reginald Daves

Hal B. Holmes  
CMC Board of Trustees

#### Lynda Davis

Paula B. Massey

#### Michael H. Ellis

Hal B. Holmes  
CMC Board of Trustees

#### E. J. Ferdon

Mary Ann L. Stalvey

#### Grace Gifford

Barbara M. Thomas

#### George H. Goldfinch

CMC Board of Trustees

#### Brenda B. Graham

Paula B. Massey

#### Andrew J. Gresko

Hal B. Holmes

#### Gail Harrelson

Paula B. Massey

#### George Hearn

Marianne L. Levenson  
CMC Board of Trustees

#### Pete Hearn

Marianne L. Levenson

#### Hal B. Holmes

Marianne L. Levenson  
CMC Board of Trustees

#### Patti Hudson

Paula B. Massey

#### Christopher Huggins

CMC Board of Trustees

#### William L. Huggins

CMC Board of Trustees

#### Steve Hughes

Mary Ann L. Stalvey

#### George Jenkins

Mary Ann L. Stalvey

#### Charles Johnson

Marianne L. Levenson

#### Hilda Johnson

Jane M. Leahy

#### Jimmy Johnson

Marianne L. Levenson  
Mary Ann L. Stalvey

#### Tricia Johnson

Paula B. Massey

#### W. T. Johnson

Mary Ann L. Stalvey

#### Charles B. Jordan

CMC Board of Trustees

#### Marianne L. Levenson

CMC Board of Trustees

#### Terry B. Levenson

Hal B. Holmes

#### Fred Lewis

Jane M. Leahy

#### Richard Lovelace

Marianne L. Levenson

#### George Magrath, Jr.

Marianne L. Levenson

#### Philip Massey

Donna C. Massey

#### Rachel Massey

Virginia Massey

#### Bruce Newell

Marianne L. Levenson

#### Jaquetta Niday

Jane M. Leahy

#### Larry Paul

Mary Ann L. Stalvey

#### Edward L. Proctor

David Bennett  
Allene P. Heaton

#### Leroy Rainbow

CMC Board of Trustees

#### Dianne W. Ray

CMC Board of Trustees

#### Nelljean Rice

Marianne L. Levenson

#### Joan Riggs

John F. Sargent

#### Richard Rush

Jeanne W. Shelley

#### Gail Sansbury

Paula B. Massey

#### Jeanne Sargent

John F. Sargent

#### John W. Sargent

John F. Sargent

#### Charles G. Sasser

Hal B. Holmes

#### Marshall Sasser

Hal B. Holmes

#### Henry V. Saunders

Hal B. Holmes  
CMC Board of Trustees

#### Connie Sauvageau

Francis M. Sauvageau

#### Bernie Silverman

Barbara M. Thomas

#### Rupert Stalvey

George H. Jenkins

#### Debbie Stanley

Paula B. Massey

#### M. Wayne Staton

Marianne L. Levenson  
Ray-Watson Company  
CMC Board of Trustees

#### Gail Whitehead

Marianne L. Levenson

#### Beverly M. Wilhelm

Donna C. Massey

### Memorial Gifts

*In Memory of:*

#### James Barnette

Jay D. Moss

#### Josephine Cariello

Susan Galante

#### Herb Carver

Susan Galante

#### Kathleen M. Dupree

Marianne L. Levenson

#### William Finlayson

#### Ceslaus C. Gajewski

Hilda Johnson

#### Billy Greene

Martha T. Altman  
Sarah Barnhill

Joanne Gardner  
Patricia A. Honosky  
Katherine M. Jackson  
Holli Schuett

**Betty Ann Griffin**  
Edward L. Proctor

**W.R. Griffin**  
Kathleen S. Hill

**Lucille B. Harrelson**  
Martha Wingo

**Paul Houck**  
Billy J. Chestnut

**Frances M. Hucks**  
Edward L. Proctor

**Lela P. Jordan**  
378 Mini Warehouses

**Fern Krofft**  
Conway Hospital Auxiliary  
Denise McCray

**Whitney Lattanzio**  
Susan Galante

**John Massey**  
Philip Massey

**Kathryn McClay**  
Conway Hospital Auxiliary

**Eva Moss**  
Betty Jo Carroll  
Shirley M. Melton

**Alton Sheffield**  
Barbara M. Groont  
Julie Rajotte

**Agnes Slack**  
Susan Galante

**Andrew M. Smith**  
Bernard A. Ausprung  
William R. Benson  
Mary K. Bittle  
Joe Burroughs  
Lucille Danker  
George Hearn  
Paula B. Massey  
James W. Polatty  
John H. Rickens

**Juanita Staton**  
Philip A. Clayton

**Pearl Templin**  
378 Mini Warehouses

**Pearl Templir**  
Sandra C. Creel

**E. Payton Thompson**  
Betty T. Kier  
Lois J. White

**Elise Vereen**  
Edward L. Proctor

### **Employee Campaign 2008**

Paula Adams  
Vanessa Aklin  
Betty Alexakos  
JoAnn Alford\*\*  
Dorothy Allen  
Carolyn Altman\*\*  
Martha Altman\*  
George & Rita Anderson  
James Anderson  
Julia Arroyo  
Thom Avison  
Frances Baggett  
Clyde Baker\*  
Donya Baker\*  
Christine Barber\*  
Ana Barfield  
Sarah Barnhill\*  
Marion Becker\*\*  
Nissa Bellamy  
Sharon Bellamy  
Wanda Biser  
Susan Blackwelder\*  
Magda Blanton  
Bonnie Boehlke\*  
Button Boyd\*  
Elizabeth Boyd\*  
Elizabeth Bright\*\*  
Doris Britt\*  
Pam Brooks  
Tishia Brooks\*  
John Brown  
Louise Brown  
Teresa Brown\*  
Judy Brunelle  
Brenda Burch  
Linda Burdick  
Brenda Burgett\*\*  
Billy Burleson\*  
Jean Burleson\*  
Rhonda Butler\*  
Kimberly Carlson  
Karen Carpenter\*  
Patsy Carroll  
Judy Carter  
Loxie Cauley  
Constance Chandler

Heidi Cherry  
Weslyn Chickering  
Tammy Clardy  
Phil Clayton  
Jennifer Coker  
Mildred Collins  
Mary Ann Cooke  
Lori Cooper  
Ginger Cosner\*\*  
Barbara Cox  
Lisa Coyne\*\*  
Natasha Crate  
Celestine Crawford  
JoAnn Crenshaw  
Dorothy Crosby  
Kelli Culclasure\*  
Betty Davis  
Joanna Deagan  
Lori Dean\*  
Marta DeGroot\*  
Gina Dilmore\*  
Delores Donald  
Joyce Donnelly  
Anna Easterling  
Sue Edwards  
Brookie Edwards, Jr.  
Jennifer Ennis  
Sandy Espinol\*  
Robert Fagnant\*  
Marcia Faschan  
Grace Fleisch\*  
Hattie Fore  
Laura Fowler\*  
Larry Foye\*  
Kay Franklin\*  
M/M Carl Franklin  
Dorothy Fullex\*\*  
Robert Gajewski  
Susan Galante\*\*  
Joanne Gardner\*  
Margaret Gause  
Dwight Gentry\*  
Jason Gerner\*  
Kristi Gilfillan\*  
Debra Goebel  
Scott Goldberg\*  
Sylvia Graham  
Tony Graham  
Betsy Greene\*  
Carole Ann Grosklos\*  
Donald Grosklos\*  
Linda M. Hall  
Wendy Hardee\*  
Jacqueline Harker  
Gail Harrelson\*  
Sandra Hartley\*  
Margaret Harty\*  
Cathy Hayes\*  
Inez Hearl\*  
Marcia Hearl  
Janice Hendrick\*

Charity Herring  
Jean Heselbarth  
Caroline Hiatt  
Teresa Hicks  
Maureen Hiley  
Glenn Hill  
Eloise Holmes  
Nellie Huggins  
Kelsey Hughes\*  
Craig Hyman\*\*  
Katherine H. Jackson\*  
Carol Jasniewski  
Carolyn Johnson  
Hilda Johnson  
Linda Johnson\*  
Nellie Johnson  
Tuesday Johnson  
Linda Jordan  
Priscilla Julious  
Aimee Justice  
David Kacinko  
Crystal Kimball  
Shonda Kirton  
Jean Kitko\*  
Steve Lanning  
Donna Lassiter  
Jane Leahy  
Barbara Lewis  
Freddie Lewis\*  
Alpressa Linen\*  
Kim Litton  
Cornelia Livingstone  
Queetia Logue  
Darlene Lorenzen\*\*  
Rita Lorrick  
Tom Lovelace\*  
Kevin Lovett\*\*  
Katherine Lundy\*  
Dawn Lyles  
Doris MacDonald  
Nancy Mangialetti  
Kristie Manjarrez  
Brenda Mansfield  
Frank Martin\*  
Hilda Martin  
Berns Massey\*\*  
Nancy Mathenia  
Di-Ann McCann\*  
William McClay  
Len & Gail McCoy  
Denise McCray  
Patricia Melvin  
Tony Minshe  
Kelly Mitchell  
Janet Moore\*\*  
Shani Moore  
Lynne Morris\*  
Faye Moser\*  
Jennifer Mueller\*  
Celia Murray  
Julia Nale\*\*

Cynthia Nance\*  
S. Page Neville\*\*  
Joan Newton\*\*  
Debra Noce  
Virginia Novello  
Sandra & Ted Paffenback  
Mary Ann Page\*  
Chris Papcun  
Bonnie Pardue  
Russell Parr\*  
Joan Perry\*  
Elaine Pettit\*  
Margaret Philips  
Angela Phillips  
Terri Pickens\*  
Angie Porter\*  
Kimberly Poston\*\*  
Bernice Powell  
Richard Proffitt  
Melissa Jane Propps\*\*  
Ann Rabon  
Kelly Rabon  
Julie Rajotte\*\*  
Latasha Randall  
Warren Rately  
Glen Ray  
Terry Reardon\*  
Jayne Register  
Dorothy Rehm  
Wanda Rhodes\*  
Donna Richardson\*\*  
Michael Ritchie\*  
Wanda Rivera  
Donna Robinson\*  
Jane & William Roche  
Claudia Rogers\*\*  
Colleen Rotella\*\*  
Sheila Rowe-Pyle  
Tammie Rupe\*\*  
Jessica Sasser  
Adecia Sawyer\*  
Terry Schroder\*  
Nancy Seeds\*\*  
Mary Jane Sellers \*  
Peggy Sellers \*  
Jeanne Shaffer  
Ann Sheffield\*\*  
Tammy Sherman  
Ellen Simanski  
Leslie Small  
Patsy Small  
Ronnie Small\*  
Daphene Smith  
Debra Smith  
Janie Smith\*  
Pam Smith  
Rebecca Smith  
Annette Solomon  
Gloria Spain  
Tamara Spirakis\*  
Jackie Squires

Anne Starrs  
Richard Stillings, Sr.  
Mary Taylor\*  
Treena Thibodeau  
Thelma Thiele  
Debra Thompson  
Linda Tischner  
Harold Todd  
Kathy Wade  
Anna Wagner  
Sandra Wetter  
Janelle White  
Ruby White  
Kristin Wilder\*  
Anita Williams  
Angela Williford\*\*  
Wanda Wise  
Doris Wolford\*\*  
Carol Wood  
Cynthia Woodruff\*  
Cleo Wright

\*Thirty-Minute Club  
\*\*Sixty-Minute Club

## Society of Friends

### Lifetime Chairman's Circle

*Recognizes cumulative gifts of \$100,000 or more*

AVX Corporation  
Burroughs & Chapin Co.  
Conway Chrysler Dodge Jeep  
CMC Auxiliary  
Conway National Bank  
Dr. & Mrs. Edward L. Proctor  
Santee Cooper  
Mrs. Louise D. Strickland  
SunCom  
Tanger Outlet Centers  
Waste Management  
Mr. & Mrs. Jeff Whittington

### Lifetime Fellows

*Contributors of cumulative gifts of \$25,000 or more*

Aramark Management  
Services, L.P.  
Bank Of America  
Carolina Regional Cancer  
Center  
Carolina Southern Railroad  
Chancel Construction Group,  
Inc.  
Mr. Philip A. Clayton  
CMC Board of Trustees  
Coastal Federal Bank  
Conway Ford  
Creel Oil & Gas Company  
DDC Engineers  
Dr. Claude W. Delia

Duke Endowment  
Dr. Robert J. Farrar  
First Citizens  
Mrs. Lillian H. Fowler  
Dr. Keith E. Gawith  
Dr. & Mrs. J.D. Gilland  
Grand Strand Water and  
Sewer Authority  
Hearn, Brittain & Martin  
HHA Services  
Dr. Hal B. Holmes, Jr.  
Hooters  
Horry Telephone Cooperative,  
Inc.  
Mr. John K. Massey  
PriceWaterhouseCoopers LLP  
Waccamaw Cardiology  
Wachovia  
WPDE TV-15

### Founders

*Contributors of \$10,000 or more annually*

Greg Everett  
Myrtle Beach Herald

### Benefactors

*Contributors of \$5,000 or more annually*

BILO Charities, Inc.  
Dr. L.B. Courtney  
Dr. Michael H. Ellis  
Tom Evans  
Robert Griffin  
Johnson Controls  
Mr. & Mrs. George N.  
Magrath, Jr.  
John R. Poston  
South Carolina Electric & Gas

### Patrons

*Contributors of \$2,500 or more annually*

BB&T  
Carolina Radiology  
Associates  
Carolyn Bailey, State Farm  
Insurance  
CashRetriever Systems  
CMC Finance Committee  
Dennis Disabato  
Dr. J. Stewart Haskin, Jr. MD  
Horry County State Bank  
James P. Howle  
Lighthouse Care Centers of  
Conway  
Morrison Mgmt. Specialists  
Jay D. Moss  
Palmetto Brick Company  
John D. Sanders  
W. P. Law, Inc.

### Partners

*Contributors of \$1,000 or more annually*

Carolina First Bank  
Carolina Hospitalists  
Castles Engineering  
Chamberlin Edmonds  
CMC Executive Committee  
CMC Quality Committee  
Coastal Carolina Financial  
Services  
Coastal Carolina OBGYN LLC  
Coastal Crane Service  
Coastal Kidney Center  
Coastal Orthopaedic  
Associates  
Coastal Urology Center  
Conway Adult Medicine P.A.  
Conway Ford  
CMC Medical Staff  
Conway Pediatrics  
Crescent Bank  
Dargan Construction  
Dr. Reginald F. Daves  
Duplicates Ink  
Flow Motors  
Dwight L. Gentry, Jr.  
Eleanor J. Gibbons  
Goldfinch Funeral Services  
Inc.  
Grand Strand Quilters  
Hard Rock Park Myrtle Beach  
Operations, LLC  
Harrell Saltrick Hopper PC  
George Hearn  
Mr. & Mrs. John P. Henry  
Susan Herrmann  
Mr. & Mrs. Dennis Hiller  
Kelley Hiller  
Dr. & Mrs. Frank F. Humbles  
Heidi Hutley  
Craig Hyman  
J & K Home Furnishings  
J. C. Ray  
Crystal Kimball  
Dr. Edward W. King  
Landmark Builders of SC LLC  
Dr. Terry B. Levenson  
Kevin Lovett  
M.B. Kahn Construction Co.,  
Inc.  
Manning Design Group, Inc.  
Marziano and McGougan  
P.A.  
Mr. & Mrs. Bernard C.  
Massey  
Dr. Camille B. Mills, MD  
Peoples Underwriters, Inc.  
Plantation Federal  
Project Services Group LLC  
Julie Rajotte

Ray-Watson Company  
Michelle C. Richardson  
Claudia Rogers  
Sassy Girl  
SCANA Services Inc.  
Annamarie Sheffield  
Ronnie Small  
Smith, Sapp, Bookhout,  
Crumpler & Calliham, P.A.  
State Farm Insurance  
Time Warner Cable  
Total Vending  
Transmed LLC  
William Von Herrmann  
Waccamaw Prosthetics &  
Orthotics  
Wachovia Corporation  
Wal-Mart Foundation  
WBTW-Florence  
Deborah D. Webster  
Mr. & Mrs. Patrick C. Webster  
Dr. & Mrs. Randal J.  
Werkhoven  
Wilkerson Associates  
Angela Williford  
Cheff Yarborough

### Associates

*Contributors of \$500 or more annually*

Wendell Beverly  
Drs. Don & Lynn Brook  
CMC Compensation  
Committee  
Coca-Cola Bottling Co.  
Consolidated  
Kenneth E. Crutchfield  
John J. Daly, Jr.  
Dr. Russell L. Derrick  
Kathleen Elms  
Laura Fowler  
Gina Glover  
Greenwall Construction  
Service  
Gene Hoots  
Dr. Jody Hutson, DO  
Dan J. Isenogle  
Hilda Johnson  
Linenman, LLC DBA Fox &  
Hounds Antique Mall  
Darlene Lorenzen  
Dawn Lyles  
M B Kahn Foundation, Inc.  
Mancill Electric  
Blake A. Martin  
Rachel Myers  
Julia A. Nale  
Mary Ann Page  
Terri Pickens  
Angela Porter  
Kimberlyn Poston

Ramey Presson  
Lionel D. Rajotte, Jr.  
Dr. Camille Sabbagh, MD  
Jessica Sasser  
Dr. Henry V. Saunders  
Adecia Sawyer  
Cyndi C. Smith  
Kayla Smith  
M. Wayne Staton  
John Strosnider  
Tanger Properties LP  
Tanglewood Enterprises  
Thermal Resource Sales, Inc.  
Anthony Trask  
Tammy Trulove  
Wal-Mart SuperCenter  
Woman's Medical Center,  
P. A.  
Dr. Keith E. Wyche

### Friends

*Contributors of up to \$250 annually*

378 Mini Warehouses  
Mr. & Mrs. Clifford Adams  
Paula Adams  
Priscilla Adams  
Vanessa Aklin  
Betty W. Alexakos  
Cynthia Alford  
Benny Allen  
Dorothy Allen  
Martha T. Altman  
James E. Anderson  
Julia H. Arroyo  
Daniel A. Asmonga  
Associated Insurors / First  
Southeast Insurance  
Services  
Bernard A. Ausprung  
Thomas Avison  
Aynor Home Medical  
Equipment  
Frances Baggett  
Bagnal's Pharmacy, Inc.  
Donya Baker  
Leonard Barefoot  
Ana Barfield  
Sarah Barnhill  
Bell & Bell Buick Pontiac  
GMC  
Nissa Bellamy  
Sharon Bellamy  
Mr. & Mrs. David Bennett  
William R. Benson  
Carol A. Biagini  
Magda A. Blanton  
Button Boyd  
Elizabeth S. Boyd  
Doris Britt  
Pamela Brooks

Tishia Brooks	Marcia Faschan	Donna Hurley	Jennifer Mueller	Lessie Small
Albert Broughman	Paul Fayad	J. Moire Shoe Salon	Celia Murray	Patsy Small
John Brown	Paula Fellows	Katherine M. Jackson	Ozell J. Newman	Daphene Smith
Louise Brown	Dennis Finley	Carol Jasniewski	Kathleen B. Niederwerfer	Debra Smith
Sophia Brown	Grace Fleisch	Carolyn Johnson	Richard Nixon	Pamela Smith
Teresa Brown	Keith C. Fleming	Nellie Johnson	Debra Noce	Rebecca R. Smith
Judy Brumell	Mr. & Mrs. George W. Foley	Tuesday Johnson	Virginia Novello	Annette Solomon
Brenda Burch	Hattie Fore	John Jollie	Lorna Nuzny	Gloria Spain
Linda Burdick	Tiffany Fowler	Linda Jordan	Ocean View Mobile Home	Tamara Spirakis
Brenda Burgett	Marjorie S. Foxworth	McKenzie R. Jordan	Park LLC	Jackie Squires
Billy Gene Burleson	Carl S. Franklin	Priscilla Julious	Frank Orlando	Judy Squires
Charles R. Cahoon	Robert Gajewski	Aimee Justice	Ted Paffenback	Mr. & Mrs. Rupert Stalvey
Phyllis M. Cannon	Joanne Gardner	David M. Kacinko	Christine Papcun	Anne Starrs
Kimberly A. Carlson	John Gause	Mary Keller	Bonnie Pardue	Ruth Stillings
Karen Carpenter	Margaret Gause	Betty T. Kier	Sharon Parker	Jackie L. Stokes
Betty Jo Carroll	Stephanie D. Geraci	Shonda Kirton	Suzy Pennington	Dennis W. Strickland
Patsy Carroll	Jonathan Gibson	Margaret Krupka	Joan Perry	Surfside Moose Lodge 2351
Judy Carter	June Maupin Gibson	Lake Pointe Advertising LLC	Elaine Pettit	Mary Taylor
Ronald Cassidy	Debra Goebel	Willie Oneal Lane	Angela Phillips	Trenea Thibodeau
Loxie Cauley	William Goldfinch	Donna Lassiter	Margaret A. Phillips	Thelma Thiele
Centenary United Methodist	Liezel Gonzales-Ilarina	William E. Lawson	James W. Polatty, Jr.	Barbara McMillan Thomas
- Women of Worship Cir.	Sylvia Graham	Jane M. Leahy	Angie Porter	Debra Thompson
Daniel Cesaraz	Tony Graham	Barbara P. Lewis	Susan G. Posey	Joan Thompson
Terry G. Chandler	Natisha Grate	David G. Lewis, CPA	Bernice Powell	Phillip E. Thompson
Heidi Cherry	Rebekah Graveline	Janet Liles	Gary Pratt	William L. Thorp
Billy J. Chestnut	Barbara M. Groont	Alpressa Linen	Judy Price	Linda C. Tischner
Weslyn Chickering	Carole Ann Grosklos	Kim Litton	Richard Proffitt	Matthew A. Turbeville
Diana M. Cianflocco	Donald Grosklos	Cornelia Livingstott	Melissa J. Propps	Dennis J. Vanevery
Tammy Clardy	Cherie Carter Hall	Phil Lobianco	David Puccio	Waccamaw Bank
Tonya R. Clark	Linda Hall	Quetia Logue	Patricia Ann J. Rabon	Kathy Wade
Chris R. Coble	Wendy Hardee	Kelley Long	Latasha Randall	Anna Lee Wagner
Jennifer Coker	Rebecca Hardwick	Rita Lorick	Glenn Ray	Collins Wakefield
Mildred Collins	Jacqueline Harker	Robert Lowman	Jayne Register	L F. Waldrop
William Colton	Mr. & Mrs. Todd Harms	Katherine Lundy	Dorothy Rehm	Dr. Charles Walls
Committee to Elect Roddy	Cindy C. Harper	Mac Pro Industrys Inc -	John H. Rickens	Joseph Washington
Dickinson	Kathy T. Harper	Elwin Miles	Wanda Rivera	Waste Management J. Terry
Mary Ann Cooke	Gail Harrelson	Doris MacDonald	Marilyn G. Roberts	Bell
Lori Cooper	Sarah Harter	Nancy E. Mangialetti	Pamela Roberts	Karen Watts
Ginger Cosner	Michael Hatchell	Kristie Manjarrez	Heather Roche	Mary Elizabeth Wellons
William Courtney	Charles A. Hawkins	Brenda Mansfield	William Roche	Sandra Wetter
Barbara Cox	Dr. Richard Hayes, MD	Jean E. Marshall	Virginia Rogers	Janelle White
Celestine Crawford	Marguerite Healy	Hilda Martin	John Rogowski	Lois J. White
Scott A. Creech	Inez Hearl	Donna C. Massey	Justin Roof	Ruby White
Sandra C. Creel	Marcia Hearl	Paula B. Massey	Shelia J. Rowe-Pyle	Anita A. Williams
Joann Crenshaw	Peter L. Hearn	Philip Massey	Jamie Rowland	Marsha Williams
Dorothy Annette Crosby	Allene P. Heaton	Virginia Massey	Tammie C. Rupe	Mary Williams
Dr. Calhoun D. Cunningham	Nancy Hendrick	Nancy Mathenia	Cherie Salem	Martha Wingo
Lucille Danker	Charity Herring	DiAnne McCann	Mr. & Mrs. John F. Sargent	Wanda G. Wise
Joanna Deagan	Jean Heselbarth	William McClay	Tammy Sarvis	Doris Wolford
Lori L. Dean	Caroline Hiatt	Lenard G. McCoy	Sandra U. Saunders	Hyun Joo Woo
Marta Degroot	Teresa Hicks	Denise McCray	Dr. Mark H. Schecker	Carol Wood
Delores Donald	Maureen Hiley	Mark C. McGraw	Holli Schuett	Christopher Woodle
Joyce Donnelly	Beverly J. Hill	Lara McNelis	Mary Jane Sellers	Phyllis Wrigglesworth
Maxine Dottin	Glenn Hill	Shirley M. Melton	Peggy Sellers	Cleo Wright
Dr. Martin Duclos	Eloise Holmes	Patricia Melvin	Jeanne Shaffer	Mary Ann Young
Allison Dudley	Cathy Honeycutt	Mercy Hospice and	Tonia Shell	
Anna G. Easterling	Patricia A. Honosky	Palliative Care	Jeanne W. Shelley	
Brookie Edwards	Jeff Horowitz	Tony Minshew	Tammy Sherman	
Sue Edwards	Jerome L. Housand	Marian L. Misdom	Peter Sieler	
Jennifer Ennis	Barbara Howell	Kelly Mitchell	Ellen Simanski	
Sandy Espinal	Nellie Huggins	Shani Moore	Lynn Skipper	